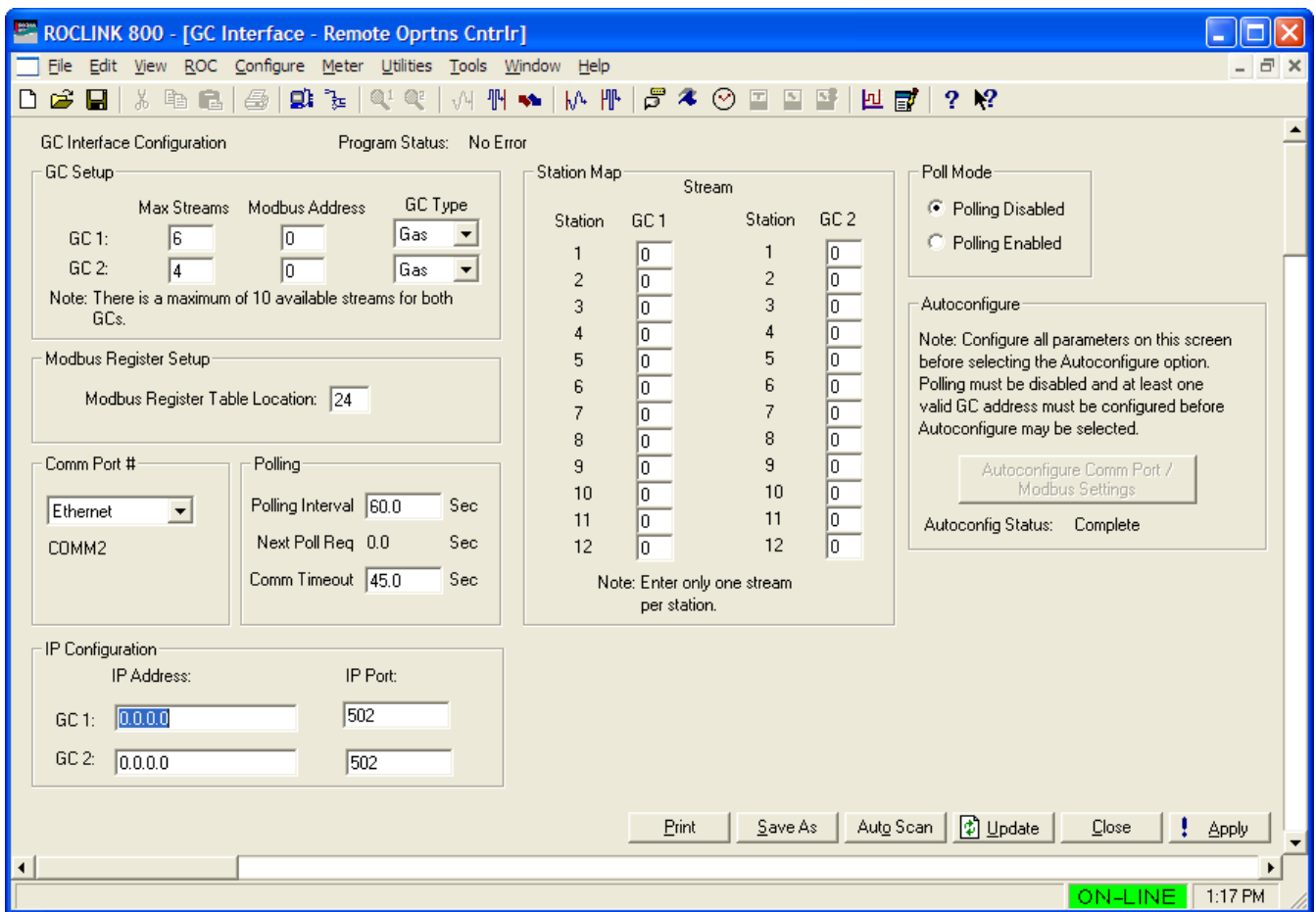


Part Number D301188X012

Form A6145

October 2016

Gas Chromatograph Interface Program User Manual (for ROC800-Series Remote Operations Controllers)



Revision Tracking Sheet

October 2016

This manual may be revised periodically to incorporate new or updated information. The revision date of each page appears at the bottom of the page opposite the page number. A change in revision date to any page also changes the date of the manual that appears on the front cover. Listed below is the revision date of each page (if applicable):

Page	Revision
All pages	October-2016
All pages	June-2016
All pages	September-2013
All pages	December-2012
All pages	July-2012
All pages	March-2009
All pages	July-2008
All pages	May-2008
All pages	September-2007
All pages	June-2006
All pages	December-2005
All pages	May-2005
Initial release	July-2003

Contents

Chapter 1 – Introduction	1
1.1 Scope and Organization	1
1.2 Product Overview	1
1.2.1 Communications Wiring	2
1.2.2 Autoconfigure	5
1.2.3 Validating GC Data	7
1.3 Program Features	9
1.3.1 License Key.....	10
Chapter 2 – Installation	11
2.1 Installing the License Key	11
2.1.1 Installing the License Key Installation	12
2.2 Installing the Program	12
2.3 MPU Loading Threshold	16
Chapter 3 – Configuration	19
3.1 GC Interface Screen	20
3.2 GC Configuration Screen	23
3.3 GC Stream Data Screen	25
3.4 Station Setup, Gas Quality Tab.....	29
3.5 Saving the Configuration.....	30
Chapter 4 – Reference	33
4.1 Point Type 65: GC User Program Configuration and Status	34
4.2 Point Type 66: GC Stream Data	41

[This page is intentionally left blank.]