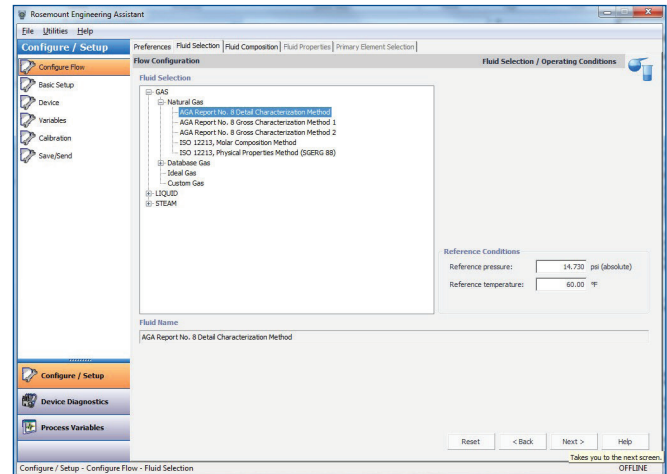


Rosemount Engineering Assistant SNAP-ON™ Application

- Download flow configurations for better control of your process
- Configure, maintain, diagnose and test Rosemount® HART® and Foundation™ fieldbus MultiVariable transmitters



Quickly configure HART and Foundation fieldbus MultiVariable transmitters to measure mass flow of virtually any process.

Perform Extended Functions

The Rosemount Engineering Assistant SNAP-ON application enables you to perform extended configuration, maintenance, diagnostics, and test calculation functions on Rosemount 3095 MultiVariable transmitters and 3051SMV MultiVariable transmitters.

The Rosemount Engineering Assistant SNAP-ON application is required to download flow configurations to all Rosemount 3095 HART and Foundation fieldbus MultiVariable transmitters and 3051SMV HART MultiVariable transmitters.

Quick Measurement of Mass Flow

Easily modify MultiVariable transmitter configurations and densities to improve product quality and reduce by-product formation or quickly get a process up and running.

Engineering time is saved because plant engineers do not have to calculate viscosities, densities, flow equations, and related mass flow calculations.

Save time and money with the Rosemount Engineering Assistant SNAP-ON application through faster setup, reduced chances of improperly configured flow transmitters, and accurate device measurements.

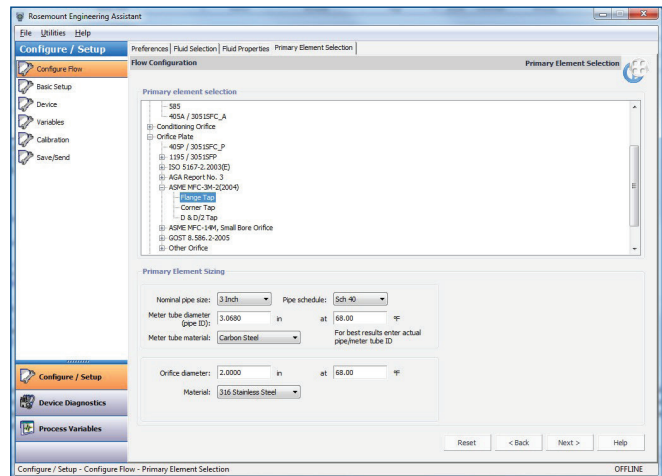
Offline or Online Mode

The Rosemount Engineering Assistant SNAP-ON application runs on AMS Device Manager and can be used in either an online or offline mode. In an online mode, the Rosemount Engineering Assistant SNAP-ON application communicates directly with the MultiVariable transmitter through AMS Device Manager. In offline mode, you can create a configuration to send to a transmitter once the Rosemount Engineering Assistant SNAP-ON application returns to online mode.

Seamless Integration with AMS Device Manager

Since the Rosemount Engineering Assistant SNAP-ON application is part of AMS Device Manager, you receive all the benefits of having a single software package and database for all your plant instrumentation. You can easily make calibration and configuration changes, access predictive diagnostics, and monitor multiple devices using a single tool.

AMS Device Manager enables you to reduce maintenance costs by detecting and diagnosing potential device problems before they can affect the process. Reduce planned shutdowns and trips to the field to focus your resources on higher-value activities.



Configuring a device for your specific process is quick and easy with the Rosemount Engineering Assistant SNAP-ON application.

Transmitter to be Configured	Version of Engineering Assistant Required
3095M HART and Foundation Fieldbus	Engineering Assistant 5
3051S Foundation Fieldbus	Engineering Assistant 5
3051SMV HART	Engineering Assistant 6

Note: If both 3095 and 3051SMV transmitters will be configured, both SNAP-ON applications must be installed.

©2020, Emerson. All rights reserved.

The Emerson logo is a trademark and service mark of Emerson Electric Co. All other marks are the property of their respective owners.

The contents of this publication are presented for informational purposes only, and while diligent efforts were made to ensure their accuracy, they are not to be construed as warranties or guarantees, express or implied, regarding the products or services described herein or their use or applicability. All sales are governed by our terms and conditions, which are available on request. We reserve the right to modify or improve the designs or specifications of our products at any time without notice.

Emerson
Reliability Solutions
 12001 Technology Drive
 Eden Prairie, MN 55344 USA
 ☎ +1 952 828 3633
 📠 +1 952 828 3006
 🌐 www.emerson.com/trex