

### Specifications

For other materials or modifications, please consult TESCOM.

#### REGULATOR

**Maximum Inlet Pressure**

1000 or 3480 psig / 69.0 or 240 bar

**Outlet Pressure Range**

145, 247 psig / 10.0, 17.0 bar maximum

**Body Material**

316L Stainless Steel

**Regulator Seat**

PCTFE

**Valve Seat**

Ceramic on Stainless Steel

**Remaining Parts**

316 Stainless Steel

**Flow Capacity**

< 9 Nm<sup>3</sup>/h at C<sub>v</sub> = 0.06 trim

**Leak Rate**

1x10<sup>-8</sup> mbar l/s He

**Operating Temperature**

-40°F to 140°F / -40°C to 60°C



TESCOM Ultra High Purity Compact Panel is a VCR<sup>®</sup> compatible central gas supply unit for pressure control of high grade analytical gases in laboratory facilities. Depending on the requirements, these units switch over to a spare cylinder in order to enable an uninterrupted gas supply. The use of contact gauges allows the monitoring of empty gas cylinders, in combination with an annunciator.

#### GAUGES

**Material**

Stainless Steel

**Connection**

1/4" HPIC (VCR<sup>®</sup> compatible internal connection)

#### RELIEF VALVE

**Outlet Connection**

6 mm Compression fitting

**Body Material**

Stainless Steel 1.4404

**Seat Material**

FKM (Viton<sup>®</sup>-A)

#### CONTACT GAUGES 2.5"

**Material**

Stainless Steel

**Scale Range**

2900 or 4570 psig / 200 or 315 bar (other ranges on request)

**Switch**

Reed switch, opens with decreasing pressure

**Surge Current**

1 A

**Permanent Current**

0.6 A

**Power**

30 Watt, 50 VA

**Cable**

3 wire, 2 m length

#### OTHERS

**Weight**

Single Cylinder Panel: 8.2 lbs / 3.7 kg

Automatic Changeover Panel: 18.5 lbs / 8.4 kg

Hastelloy<sup>®</sup> is a registered trademark of Haynes International.

VCR<sup>®</sup> is a registered trademark of Swagelok.

Viton<sup>®</sup> and Vespel<sup>®</sup> are registered trademarks of E.I. du Pont de Nemours and Company.

### Application

- Central gas supply for the distribution of gases in laboratory applications

### Advantages

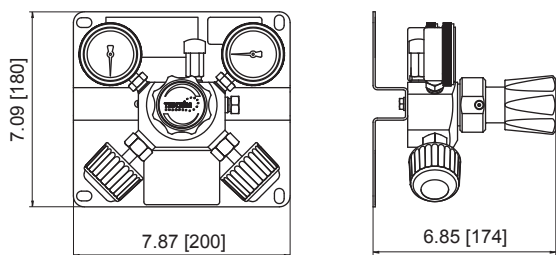
- VCR<sup>®</sup> technology for high purity application
- Automatic changeover for continuous gas supply
- Integrated purge and shut-off valve for fast purging
- Optional Hastelloy<sup>®</sup> trim and positive seal for corrosive media
- Field-proven TESCOM 64 Series regulator design

# ULTRA HIGH PURITY COMPACT PANEL

## Ultra High Purity Compact Panel Drawing

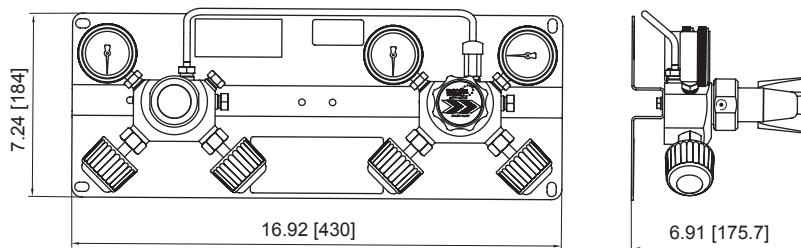
### CYLINDER PANEL STAINLESS STEEL AUTOMATIC CHANGEOVER SYSTEM

#### SINGLE CYLINDER PANEL

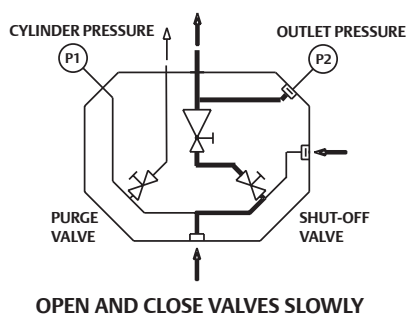


All dimensions are reference & nominal  
Metric [millimeter] equivalents are in brackets

#### AUTOMATIC CHANGEOVER PANEL

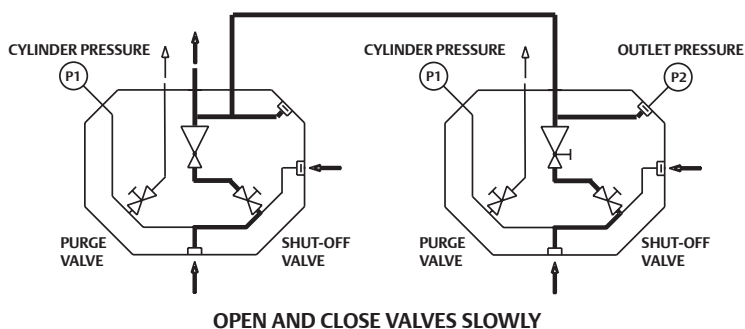


#### FUNCTIONAL DIAGRAM SINGLE CYLINDER PANEL



OPEN AND CLOSE VALVES SLOWLY

#### FUNCTIONAL DIAGRAM AUTOMATIC CHANGEOVER PANEL



OPEN AND CLOSE VALVES SLOWLY

## Ultra High Purity Compact Panel Part Number Selector

Repair Kits, Accessories & Modifications may be available for this product. Please contact TESCOM for more information.

Example for selecting a part number:

D45429 - SM - S - 2 - XXX

| TYPE                                | GAUGES                                      | VALVE UNIT                      | OUTLET PRESSURE                                    | OPTIONS<br>(PLEASE CONSULT FACTORY)   |
|-------------------------------------|---|---------------------------------|--|---|
| D45429 - Single Cylinder Panel      | SM - Standard gauges<br>KM - Contact gauges | S - Untied<br>P - Positive Seal | 1 - 145 psig / 10.0 bar<br>2 - 247 psig / 17.0 bar | <ul style="list-style-type: none"> <li><math>C_v = 0.15</math> or <math>C_v = 0.24</math></li> <li>Inlet filter</li> <li>Vespe<sup>®</sup> regulator seat</li> <li>Pigtail with cylinder connector</li> </ul> |
| D45450 - Automatic Changeover Panel |   |                                 |  |   |

#### Standard Features:

Stainless Steel mounting plate, regulator with integrated valves, inlet/outlet pressure gauges and relief valve.  
All connections 1/4" HPIC.