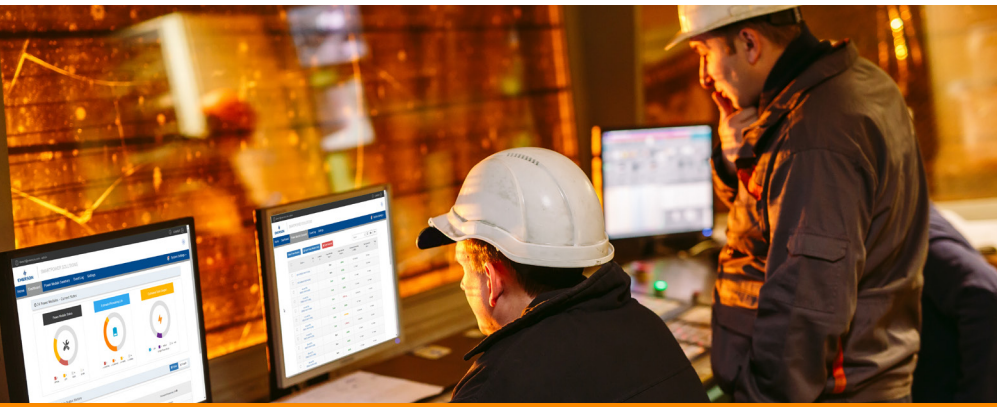


Emerson SmartPower Solutions



Monitoring device power is a key priority to maximize performance and energy efficiency in industrial facilities, yet most operations face a series of challenges when it comes to Power Module management. Process facilities often lack visibility into Power Module health, and teams across the organization struggle to anticipate Power Module depletion. Without the necessary tools and information to proactively address this problem, critical decisions are based on expired and inaccurate data, affecting production, budget costs, and wireless network performance.

OUR SOLUTION

Emerson™ SmartPower™ Modules offer best-in-class, versatile power solutions for your Emerson devices. With up to 10 years of predictable power life, SmartPower Modules are intrinsically safe and robust, allowing for routine maintenance in hazardous areas. These Modules include short circuit protection and keyed connections for easy and fail-safe replacement. Emerson's wide offering enables facilities to select power based on specific operational needs and industry requirements.

With the Plantweb™ Insight Power Module application you can remove the guess work of Power Module management and maximize performance and energy efficiency. The application provides an easy-to-interpret dashboard showing which Power Modules are depleting and require attention. A details page in the application contains all pertinent information on your Power Modules, including location, type, installation date, and more. The application also allows users to easily recognize which devices are configured for excessive power usage.

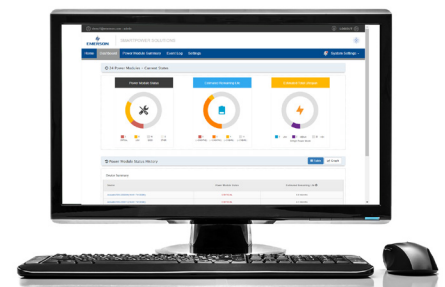
WHAT IF, YOU COULD...

...extend the life of your Power Modules?

...eliminate the guess work in Power Module maintenance planning?



Emerson's SmartPower solutions help you power your range of Emerson Wireless devices.



The Plantweb Insight Power Module application provides instant access to Power Module status and details.

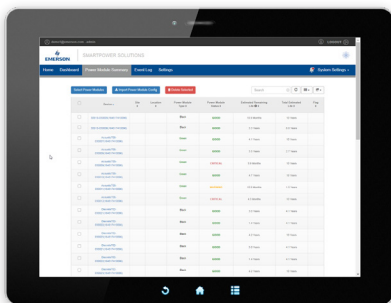
For additional information, visit the
Wireless Networks Page on Emerson.com



Emerson SmartPower Solutions

HOW IT WORKS

The Emerson Black Power Module powers the Rosemount™ 3051S, 3051SMV, 848T, 702, and 705 Transmitters, 2160 Level Switch, 928 Gas Monitor, 3308A Guided Wave Radar, and the Roxar™ CorrLog and Sandlog Transmitters. The Blue Power Module will power the same devices, but gives you double the life of the Black Module. The Emerson Green Power Module powers the Rosemount 708, 3051, 2051, and 248 Transmitters.



The Plantweb Insight Power Module application shows an aggregated view of Power Module status and estimates of Module life. The dashboard display also indicates which Modules require attention, identifies opportunities to lengthen Module life, and includes a trending and alert log for a brief historical reference of Power Module performance. The asset summary page contains comprehensive data for each individual Power Module, including location, health, type, and installation date.



EMERSON SMARTPOWER MODULE - BLUE

- **Doubles life of the Black Power Module, up to 10 years of operating life.** Designed for energy intensive applications, this Power Module allows you to extend time between replacements.
- **Advanced power management technology for high-performance transmitters.** This Power Module prolongs the life of high-performance transmitters.
- **Ready for fast update rates.** The Blue Power Module is designed for pump vibration monitoring, tanks with quick level changes, and other power-intensive applications.
- **Robust solution.** Intrinsically safe design allows for routine maintenance in hazardous areas.

Global Headquarters

Emerson Automation Solutions
6021 Innovation Blvd.
Shakopee MN 55379
USA

+1 800 999 9307 or +1 952 906 8888
+1 952 949 7001
RFQ.RMD-RCC@Emerson.com

Standard Terms and Conditions of Sale can be found at www.Emerson.com/en-us/pages/Terms-of-Use.aspx
The Emerson logo is a trademark and service mark of Emerson Electric Co.
Rosemount is a mark of one of the Emerson family of companies.
All other marks are the property of their respective owners.
©2019 Emerson. All rights reserved.

00807-0100-4701-RevAA

Consider it Solved.

Emerson supports you with innovative technologies and expertise to address your toughest challenges.

