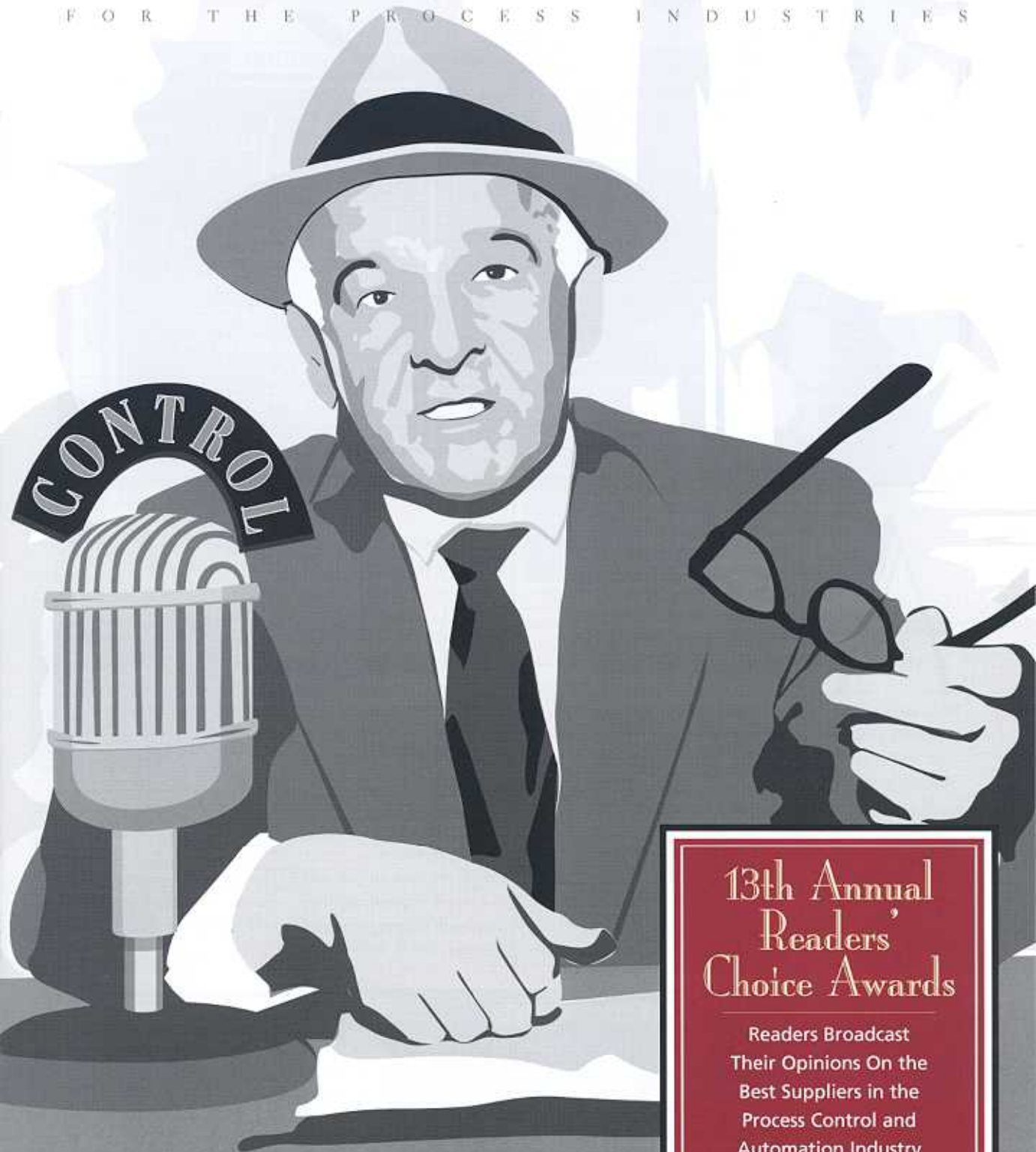


A PUTMAN MEDIA PUBLICATION

WWW.CONTROLGLOBAL.COM

# CONTROL

FOR THE PROCESS INDUSTRIES



## 13th Annual Readers' Choice Awards

Readers Broadcast  
Their Opinions On the  
Best Suppliers in the  
Process Control and  
Automation Industry



## 13th Annual Readers' Choice Awards

Readers Broadcast  
Their Opinions On the  
Best Suppliers in the  
Process Control and  
Automation Industry

**A**s we have done every year since 1991 we're broadcasting our readers' opinions of process automation and control technologies vendors. Does this thirteenth-annual Readers' Choice Awards reveal any breathtaking new

**Steve Kuehn,**  
Managing Editor

winner or any striking falls from grace? Well, in a word no, but that's a good thing, perhaps reflecting a continuity to the industry in spite of some tough recessionary years and waves of consolidation among the suppliers we all count on to help us get the job done. As you scan the categories you'll encounter some familiar names, many who appear also in The CONTROL Top 50 list (p26, Dec. '04).

What our readers' opinions do reveal is that year-after-year, certain companies have, through good technology and good service, been able to retain that key "front-of-mind" awareness. In other words, a positive presence that is readily recalled when the CONTROL's Readers' Choice Awards sur-

vey lands in the inbox and asks readers to name the vendors delivering the best technologies across 71 categories.

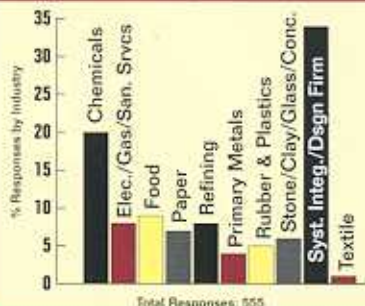
Similarly, we asked readers to rate vendors' ability to deliver customer service (see Table). This line of inquiry goes right to the heart of the matter because even if a company has the best technology it won't mean much if the mechanisms of delivery and after-the-sale service are not in place to keep you satisfied once the check has cleared.

### You Are the Judge

To our mind, you, our readers, are the ultimate judges of the "character" of the process industry's suppliers, and through your interactions with them, have the only truly valid opinion of their performance. Our intent with the Readers' Choice Awards is to provide you with a vehicle to voice your opinions in a way that broadcasts loud and clear to suppliers how they stand with the people who put the "P" in their profit margins. We think they'll listen.

### READERS' CHOICE AWARDS SURVEY DEMOGRAPHICS

The 13th Annual Readers' Choice Awards survey was e-mailed to a controlled list of more than 20,000 representing a cross section of CONTROL's readership. Respondents were asked to write, unprompted, the name of the most outstanding supplier in each of 71 distinct technology categories. Respondents were also asked to rate that supplier on a scale of 1-5, with 1 being poor and 5 being excellent, on the basis of service. Results were tabulated from a total of 555 qualified responses. The survey's margin of error is an estimated 4% at a 90% confidence level and the Figure shows responses by industry.





MSA'S ULTIMA  
X SERIES GAS MONITOR

### ANALYZERS, AMBIENT GAS DETECTORS

- |                 |     |
|-----------------|-----|
| 1. MSA          | 40% |
| 2. Draeger      | 9%  |
| Scott Bacharach | 7%  |



RONAN ENGINEERING'S X500F

### ANNUNCIATORS

- |                        |     |
|------------------------|-----|
| 1. Ronan Engineering   | 21% |
| 2. Ametek Panalarm     | 16% |
| 3. Rockwell Automation | 11% |



MICRO MOTION'S ELITE FLOWMETER

### ANALYZERS, DENSITY/CONCENTRATION

- |                                 |     |
|---------------------------------|-----|
| 1. Emerson Process-Micro Motion | 46% |
| 2. Endress+Hauser               | 12% |



EMERSON'S FISHER DIGITAL VALVE

### CONTROL VALVES

- |                                    |     |
|------------------------------------|-----|
| 1. Emerson Process-Fisher Controls | 65% |
| 2. Flowserve-Valtek                | 11% |
| 3. Dresser Masoneilan              | 7%  |



SIEMENS' MAXUM  
EDITION II/MICROSAM

### ANALYZERS, GAS CHROMATOGRAPH

- |   |     |
|---|-----|
| 1. Siemens-Applied Automation           | 28% |
| 2. Emerson Process-Rosemount Analytical | 23% |
| 3. ABB                                  | 18% |



HOFFMAN'S GOLD  
SERIES DESK CONSOLES

### ENCLOSURES

- |            |     |
|------------|-----|
| 1. Hoffman | 73% |
| 2. Rittal  | 9%  |



GE'S MIS MOISTURE ANALYZER FAMILY

### ANALYZERS, HUMIDITY/MOISTURE

- |                   |     |
|-------------------|-----|
| 1. GE Panametrics | 20% |
| 2. Vaisala        | 14% |
| 3. Ametek         | 8%  |



MICRO MOTION'S F-SERIES

### FLOWMETERS, CORIOLIS

- |                                 |     |
|---------------------------------|-----|
| 1. Emerson Process-Micro Motion | 81% |
| 2. Endress+Hauser               | 9%  |



ROSEMOUNT'S PH/ORP FAMILY

### ANALYZERS, PH/ORP/CONDUCTIVITY

- |   |     |
|---|-----|
| 1. Emerson Process-Rosemount Analytical | 38% |
| 2. Yokogawa                             | 11% |
| 3. ABB                                  | 8%  |
| Invensys Foxboro                        | 7%  |
| GLI Hach div. of Danaher                | 7%  |
| Endress+Hauser                          | 6%  |
| 7. Mettler-Toledo                       | 5%  |



ROSEMOUNT'S 8700 SERIES

### FLOWMETERS, MAGNETIC

- |                              |     |
|------------------------------|-----|
| 1. Emerson Process-Rosemount | 43% |
| 2. Yokogawa                  | 11% |
| Endress+Hauser               | 9%  |
| 4. ABB                       | 8%  |
| Krohne                       | 6%  |
| 6. Invensys Foxboro          | 5%  |



ABB'S CONTINUOUS GAS FAMILY,  
AMETEK'S PROLINE AND  
EMERSON'S MLT SERIES

### ANALYZERS, PROCESS SPECTROMETER

- |         |    |
|---------|----|
| 1. ABB  | 7% |
| Ametek  | 7% |
| Emerson | 7% |



SIEMENS' OCM III

### FLOWMETERS, OPEN CHANNEL

- |                              |     |
|------------------------------|-----|
| 1. Siemens-Milltronics       | 23% |
| 2. Emerson Process-Rosemount | 9%  |
| Badger Meter                 | 7%  |
| Endress+Hauser               | 7%  |



ROSEMOUNT ANALYTICAL'S MICROCEM

### ANALYZERS, STACK GAS/EMISSIONS

- |   |     |
|---|-----|
| 1. Emerson Process-Rosemount Analytical | 24% |
| 2. Horiba Instruments                   | 7%  |
| Siemens                                 | 7%  |



BROOKS' BM SERIES OVAL,  
MODEL BM10

### FLOWMETERS, POSITIVE DISPLACEMENT

- |                           |     |
|---------------------------|-----|
| 1. Emerson Process-Brooks | 48% |
| 2. Badger Meter           | 6%  |
| IDEX Liquid Controls      | 6%  |



FCI'S ST50 SERIES MASS FLOWMETERS

### FLOWMETERS, THERMAL MASS FLOW

1. FCI	45%
2. Kurz Instruments	13%
Emerson Process-Brooks	11%
4. Sierra Instruments	5%



DANIEL'S SERIES 1500

### FLOWMETERS, TURBINE

1. Emerson Process-Daniel	28%
2. Hoffer Flow Control	9%
Badger Meter	8%
4. Flow Technology	5%



GE ULTRASONIC FLOWMETER

### FLOWMETERS, ULTRASONIC

1. GE Panametrics	34%
2. Emerson Process-Daniel	23%
3. Thermo Electron-Polysonics	14%
4. Controlotron	9%
Endress+Hauser	7%



BROOKS' AR-MITE MODEL 3750C

### FLOWMETERS, VARIABLE AREA

1. Emerson Process-Brooks	54%
---------------------------	-----



ROSEMOUNT'S REDUCER VORTEX

### FLOWMETERS, VORTEX SHEDDING

1. Emerson Process-Rosemount	39%
2. Yokogawa	22%
3. Invensys Foxboro	13%
4. Endress+Hauser	9%



FCI'S MASS FLOW SWITCHES

### FLOW SWITCHES

1. FCI	35%
2. Endress+Hauser	12%
ifm efector	10%
4. Dwyer	5%



DELL'S POWEREDGE 2850

### INDUSTRIAL COMPUTERS

1. Dell Computer	25%
2. Rockwell Automation	15%
3. Advantech	6%
Xycom	5%



ALLEN-BRADLEY'S ARMORPOINT I/O

### INPUT/OUTPUT (I/O) SYSTEMS

1. Rockwell Automation	38%
2. Emerson Process Management	9%
3. AutomationDirect.com	5%



SWAGelok'S MPC

### INSTRUMENT FITTINGS

1. Swagelok	63%
2. Parker Hannifin	26%



PEPPERL-FUCHS' K-SYSTEM

### INTRINSIC SAFETY BARRIERS

1. Pepperl+Fuchs	19%
2. Banner Engineering	11%
MTL	11%
4. Rockwell Automation	6%
Phoenix Contact	5%
Turck	5%



AMETEK'S UNIVERSAL III, ENDRESS-HAUSER'S MINICAP AND EMERSON'S FISHER TYPE DL3

### LEVEL GAUGES, ELECTRICAL PROPERTY-BASED

1. Ametek Draxelbrook	16%
Endress+Hauser	16%
Emerson Process-Fisher Controls	14%
4. Magnetrol	6%



EMERSON'S FISHER TYPE DL3

### LEVEL GAUGES, FLOAT/DISPLACER TYPE

1. Emerson Process-Fisher Controls	35%
2. Magnetrol-Orion	31%
3. Danaher Gems Sensors	8%
Dresser Masoneilan	6%
K.Tek	6%



OHMART VEGA'S FLEX 67

### LEVEL GAUGES, TOR RADAR

1. Ohmart Vega	31%
2. Emerson Process-Rosemount	26%
3. Endress+Hauser	22%
Magnetrol	22%
5. Krohne	9%



OHMART VEGA'S PULS 68 AND EMERSON-ROSEMOUNT'S S600

### LEVEL GAUGES, NON-CONTACT RADAR

1. Ohmart Vega	30%
Emerson Process-Rosemount	28%
3. Endress+Hauser	19%
4. Siemens-Miltronics	7%



SAAB ROSEMOUNT'S TANKRADAR REX

### LEVEL GAUGE, INVENTORY GRADE

- |                                   |     |
|-----------------------------------|-----|
| 1. Emerson Process-Saab Rosemount | 30% |
| 2. Endress+Hauser                 | 12% |



OHMART VEGA'S FIBER FLEX

### LEVEL GAUGES, NUCLEAR

- |                    |     |
|--------------------|-----|
| 1. Ohmart Vega     | 36% |
| 2. Thermo Electron | 33% |



MILLTRONICS' MULTIRANGER

### LEVEL GAUGES, ULTRASONIC

- |  |     |
|--|-----|
| 1. Siemens Milltronics                     | 37% |
| 2. Endress+Hauser                          | 11% |
| 3. Magnetrol                               | 6%  |
| Emerson Process Measurement-Saab Rosemount | 6%  |
| Ohmart Vega                                | 6%  |
| Flowline                                   | 5%  |



ENDRESS+HAUSER'S LIQUIPHANT M

### LEVEL SWITCHES, POINT

- |                       |     |
|-----------------------|-----|
| 1. Endress+Hauser     | 26% |
| 2. Ametek Drexelbrook | 17% |
| 3. Magnetrol          | 11% |
| 4. SOR                | 5%  |
| Thermo Electron       | 5%  |



ALLEN-BRADLEY'S INVIEW MESSAGE DISPLAY

### OPERATOR INTERFACE TERMINALS

- |                        |     |
|------------------------|-----|
| 1. Rockwell Automation | 47% |
| 2. Honeywell           | 5%  |



ALLEN-BRADLEY'S PANELVIEW PLUS

### PANEL DISPLAYS

- |                        |     |
|------------------------|-----|
| 1. Rockwell Automation | 45% |
| 2. Red Lion            | 10% |



FLUKE'S 744 DOCUMENTING PROCESS CALIBRATOR

### PORTABLE CALIBRATORS

- |                           |     |
|---------------------------|-----|
| 1. Fluke, a Danaher Co.   | 51% |
| 2. Altek/Transmation      | 12% |
| 3. GE Druck               | 7%  |
| Emerson Process-Rosemount | 5%  |



SOLA/HEVI-DUTY'S SON PERFORMANCE DIN RAIL SERIES

### POWER SUPPLIES

- |                    |     |
|--------------------|-----|
| 1. Sola/Hevi-Duty  | 27% |
| 2. Acopian         | 17% |
| 3. Phoenix Contact | 8%  |
| 4. Idec            | 5%  |



ROSEMOUNT'S 3051S SERIES

### PRESSURE TRANSMITTERS

- |                              |     |
|------------------------------|-----|
| 1. Emerson Process-Rosemount | 73% |
| 2. Honeywell                 | 7%  |



EMERSON'S DELTAV DIGITAL AUTOMATION SYSTEM

### PROCESS CONTROL/AUTOMATION SYSTEMS

- |                               |     |
|-------------------------------|-----|
| 1. Emerson Process Management | 29% |
| 2. Rockwell Automation        | 22% |
| 3. Honeywell                  | 9%  |
| Invensys                      | 9%  |
| 5. Siemens                    | 6%  |
| ABB                           | 5%  |



HONEYWELL UDC3200 UNIVERSAL DIGITAL CONTROLLER

### PROCESS LOOP CONTROLLERS

- |                               |     |
|-------------------------------|-----|
| 1. Honeywell                  | 19% |
| 2. Emerson Process Management | 9%  |
| ABB (sold to MicroMod Inc.)   | 8%  |
| Invensys-Foxboro              | 8%  |
| Yokogawa                      | 8%  |
| Moore Industries              | 7%  |
| 7. Siemens                    | 5%  |



ALLEN-BRADLEY'S CONTROLLOGIX CONTROLLER

### PROGRAMMABLE LOGIC CONTROLLERS

- |                        |     |
|------------------------|-----|
| 1. Rockwell Automation | 67% |
| 2. Schneider Electric  | 6%  |
| AutomationDirect.com   | 5%  |
| Siemens                | 5%  |



PEPPERL+FUCHS' SERIES 4000

### PURGE SYSTEMS

- |                        |     |
|------------------------|-----|
| 1. Pepperl+Fuchs-Bebco | 36% |
|------------------------|-----|



YOKOGAWA'S DAQSTATION DX SERIES

### RECORDERS

- |                                |     |
|--------------------------------|-----|
| 1. Yokogawa                    | 25% |
| 2. Honeywell                   | 14% |
| 3. Invensys Eurotherm Chessell | 6%  |
| ABB                            | 5%  |



ALLEN-BRADLEY'S SCL 500

### REMOTE TERMINAL UNITS

1. Rockwell Automation	34%
2. Emerson Process Management	6%
Honeywell	6%
SixNet	5%



ROSEMOUNT'S RTDS

### RESISTANCE TEMPERATURE DETECTORS

1. Emerson Process-Rosemount	47%
2. Pyromation	10%
3. Omega Engineering	7%
Burns Engineering	5%
JMS Southeast	5%



TRICONEX'S TRIDENT

### SAFETY/EMERGENCY SHUTDOWN SYSTEMS

1. Invensys-Triconex	22%
2. Rockwell Automation	11%
Honeywell	9%
4. Siemens	6%



MOORE INDUSTRIES' SPA2

### SIGNAL CONDITIONERS

1. Moore Industries Int'l	18%
2. Invensys Eurotherm	14%
Action Instruments	14%
3. Phoenix Contact	8%
Acromag	6%



EMERSON'S DELTAV EMBEDDED  
ADVANCED CONTROL

### SOFTWARE, ADVANCED PROCESS CONTROL

1. Emerson Process Management	25%
2. Honeywell	12%
Rockwell Automation	11%
4. Aspentech	9%
Invensys	9%



EMERSON'S AMS SUITE:  
INTELLIGENT DEVICE MANAGER

### SOFTWARE, ASSET MANAGEMENT

1. Emerson Process Management	37%
2. SAP	8%



EMERSON'S DELTAV BATCH

### SOFTWARE, BATCH CONTROL

1. Emerson Process Management	27%
2. Rockwell Automation	13%
3. Rockwell Automation	8%
Invensys Wonderware	7%
Invensys Foxboro	7%
Honeywell	6%



EMERSON'S AMS SUITE  
CALIBRATION ASSISTANT

### SOFTWARE, CALIBRATION MANAGEMENT

1. Emerson Process Management	25%
2. Honeywell	11%
3. Danaher Fluke	5%



AUTODESK'S AUTOCAD  
ELECTRICAL 2005

### SOFTWARE, DESIGN/DOCUMENTATION

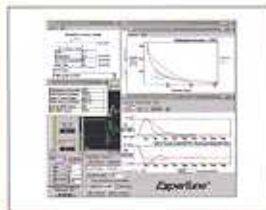
1. AutoDesk AutoCAD	36%
2. Microsoft Visio	8%
Intergraph	7%



INVENSYS' INTOUCH 9.0 HMI SOFTWARE

### SOFTWARE, HUMAN-MACHINE INTERFACE

1. Invensys Wonderware	32%
2. Rockwell Automation	24%
3. GE Infrastructure	12%



EXPERTUNE'S ANALYZER & TUNER

### SOFTWARE, LOOP TUNING

1. Expertune	20%
2. Emerson Process Management	16%
3. Rockwell	7%
Honeywell	6%



EMERSON'S DELTAV NEURAL

### SOFTWARE, NEURAL NETWORKS

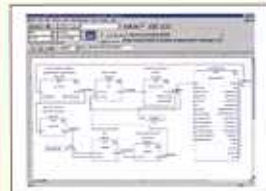
1. Emerson Process Management	15%
2. Pavilion Technologies	10%



EMERSON'S DELTAV V7.4 SOFTWARE

### SOFTWARE, PROCESS CONTROL

1. Emerson Process Management	27%
2. Rockwell Automation	18%
3. Honeywell	10%
4. Invensys Wonderware	7%
Invensys Foxboro	7%



ROCKWELL SOFTWARE'S  
RSLOGIX 5000

### SOFTWARE, PLC PROGRAMMING

1. Rockwell Automation	68%
2. Schneider Electric	6%



INVENSYS' SCADALARM 6.0

### SOFTWARE, SCADA

1. Invensys Wonderware	21%
2. GE Infrastructure	12%
Rockwell Automation	11%
4. Emerson Process Management	6%
National Instruments	6%
OSISoft	5%



ASPENTECH'S ASPEN PLUS AND HYSYS

### SOFTWARE, SIMULATION

1. AspenTech	20%
2. Mynah Technologies	10%
Rockwell Automation	10%
Invensys	9%



RAYTEK'S MID

### TEMPERATURE SENSORS, INFRARED

1. Danaher Fluke-Raytek	24%
2. IRCON	13%



ROSEMOUNT'S 3144P

### TEMPERATURE TRANSMITTERS

1. Emerson Process-Rosemount	60%
2. Honeywell	8%
3. Invensys Foxboro	5%
Omega Engineering	5%



ROCKWELL'S BULLETIN 1492 AND PHOENIX CONTACT'S UT UNIVERSAL SCREW CLAMP

### TERMINAL BLOCKS

1. Rockwell Automation	26%
Phoenix Contact	24%
3. Weidmüller	17%
4. Entrelec	7%



OMEGA'S AND ROSEMOUNT'S THERMOCOUPLE PROBES

### THERMOCOUPLES

1. Omega Engineering	23%
Emerson Process-Rosemount	21%
3. Pyromation	7%
JMS Southeast	5%
Watlow	5%



FLOWSERVE LIMITORQUE'S MX-05 AND ROTORK'S 1QT

### VALVE ACTUATORS, ELECTRIC

1. Flowserve-Limitorque	13%
Rotork	12%
3. Emerson Process-Fisher Controls	10%
Flowserve-Valtek	8%
5. Beck	6%



EMERSON'S FISHER TYPE 657 ACTUATOR

### VALVE ACTUATORS, PNEUMATIC

1. Emerson Process-Fisher Controls	54%
2. Flowserve-Valtek	12%



ALLEN-BRADLEY'S POWERFLEX FAMILY OF AC DRIVES

### VARIABLE FREQUENCY DRIVES

1. Rockwell Automation	58%
2. ABB	6%
Toshiba	6%



GE ENERGY'S CONDITION MONITOR

### VIBRATION SENSORS

1. GE Energy (Bently Nevada)	57%
------------------------------	-----



MAGNETROL-ORION'S AURORA AND K-TEK'S KM26

### VISUAL LEVEL INDICATORS

1. Magnetrol-Orion	18%
K-Tek	16%
3. Penberthy	11%
4. Clark-Reliance (Jerguson)	8%
Emerson Process-Brooks	8%



METTLER TOLEDO'S Q.I. SOLUTION

### WEIGHING SYSTEMS, LOAD CELL

1. Mettler Toledo	35%
2. Vishay BLH	13%
3. Hardy Instruments	10%
4. Danaher Venture Measurement (Kistler Morse)	7%



METTLER TOLEDO'S CORNERSTONE SERIES

### WEIGHING SYSTEMS, INLINE

1. Mettler Toledo-Hispeed	20%
2. Thermo Electron-Ramsey	9%
Siemens-Milltronics	9%



BELDEN'S DATATUFF ETHERNET LINE

### WIRE & CABLE

1. Belden	56%
-----------	-----

## VENDORS OFFERING EXCEPTIONAL SERVICE (5 = EXCELLENT, 1 = POOR)

### 5.0

Ametek	Process Spectrometers
AutomationDirect.com	Process Control Systems
Turck	Intrinsic Safety Barriers

### 4.5+

Ametek	Humidity/Moisture Analyzers
AutomationDirect.com	PLC Programming Software
AutomationDirect.com	Programmable Logic Controllers
AutomationDirect.com	Terminal Blocks
Banner Engineering	Safety/Emergency Shutdown Systems
Dwyer	Flow Switches
EIM	Electric Valve Actuators
Emerson Process Management	HMI Software
Emerson Process Management	Loop Controllers
Emerson Process Management	Portable Calibrators
Emerson Process Management	Process Spectrometers
Emerson Process-Rosemount	Pressure Transmitters
Emerson Process-Rosemount	Resistance Temperature Detectors
Emerson Process-Rosemount	Temperature Transmitters
Endress+Hauser	Ultrasonic Flowmeters
Festo	Pneumatic Valve Actuators
Flowserve-Valtek	Pneumatic Valve Actuators
Invensys	Advanced Process Control Software
Invensys Eurotherm Chessell	Recorders
Red Lion	Panel Displays
Siemens	Pressure Transmitters
Sierra Instruments	Thermal Mass Flowmeters
SixNet	Remote Terminal Units
ThermoElectron-Ramsey	Inline Weighing Systems
ThermoElectron (Sensal)	Point Level Switches
Vishay BLH	Weighing System/Load Cell
Watlow	Resistance Temperature Detectors
Yokogawa	Process Control Systems
Yokogawa	Temperature Transmitters

### 4.4

Control Microsystems	Remote Terminal Units
Dresser Masonellan	Float/Displacer Level Transmitters
Emerson Process Management	Loop Tuning Software
Emerson Process Management	Neural Network Software
Emerson Process Management	Batch Control Software
Emerson Process-Micromotion	Density/Concentration Analyzers
Emerson Process-Rosemount	Electrical Property-Based Level Transmitters
Honeywell	Pressure Transmitters
Mynah Technologies	Simulation Software
Phoenix Contact	Power Supplies
Rockwell Automation	Safety/Emergency Shutdown Systems

### 4.3

ABB	Batch Control Software
Ametek Drexelbrook	Electrical Property-Based Level Transmitters
Aspentech	Simulation Software
Beamex	Portable Calibrators
Clark-Reliance (Jerguson)	Level Visual Indicators
Dresser Masonellan	Control Valves
Emerson Process Management	Asset Management Software
Emerson Process Management	Coriolis Mass Flowmeters
Emerson Process Management	Magnetic Flowmeters
Emerson Process Management	Process Control Software

Emerson Process Management	Process Control Systems
Emerson Process Management	SCADA Software
Emerson Process Management	Safety/Emergency Shutdown Syst.
Emerson Process Management	Remote Terminal Units
Emerson Process Management	Thermal Mass Flowmeters
Emerson Process-Fisher Controls	Electric Valve Actuators
Emerson Process-Fisher Controls	Pneumatic Valve Actuators
Emerson Process-Rosemount	TDR Radar Level Transmitters
Emerson Process-Rosemount	Thermocouples
Emerson Process-Saab Rosemount	Non-contact Radar Level Transmitters
Emerson Process-Saab Rosemount	Inventory-Grade Tank Level Gauge
Endress+Hauser	Non-contact Radar Level Transmitters
Endress+Hauser	Vortex Shedding Flowmeters
Flowserve-Valtek	Control Valves
Invensys Foxboro	Resistance Temperature Detect.
Invensys Wonderware	Batch Control Software
Invensys Wonderware	SCADA Software
JMS Southeast	Thermocouple
MTL	Intrinsic Safety Barriers
National Instruments	Process Control Software
Ohmart Vega	Resistance Temperature Detectors
Pavilion Technologies	Neural Network Software
Pepperl+Fuchs/Bebco	Purge Systems
Pyromation	Thermocouples
Robicon	Variable Frequency Drives
Rockwell Automation	Variable Frequency Drives
Siemens	PLC Programming Software
Swagelok	Instrument Fittings
Yokogawa	Loop Controllers
Yokogawa	Magnetic Flowmeters
Yokogawa	Recorders

### 4.2

ABB	pH/ORP/Conductivity Analyzers
Acopian	Power Supplies
Belden	Wire & Cabling
Danaher-Gems Sensors	Float/Displacer Level Transmitters
Dell Computer	Industrial Computers
Emerson Process Management	Input/Output (I/O) Systems
Emerson Process-Fisher Controls	Control Valves
Emerson Process-Fisher Controls	Float/Displacer Level Transmitters
Endress+Hauser	Electrical Prop.-based Level Transmitters
Endress+Hauser	Coriolis Mass Flowmeters
Endress+Hauser	Magnetic Flowmeters
Endress+Hauser	Pressure Transmitters
GLI Hach div. of Danaher	pH/ORP/Conductivity Analyzers
Hardy Instruments	Weighing Systems/Load Cells
Hoffman	Enclosures
Honeywell	Loop Tuning Software
Honeywell	Temperature Transmitters
Invensys Foxboro	pH/ORP/Conductivity Analyzers
Invensys Foxboro	Pressure Transmitters
JMS Southeast	Resistance Temperature Detectors
Mettler Toledo	Inline Weighing Systems
OSISoft	SCADA Software
Phoenix Contact	Terminal Blocks
Pyromation	Resistance Temperature Detectors
Rockwell Automation	Remote Terminal Units
Watlow	Thermocouples
Weidmüller	Terminal Blocks

FIND MORE SERVICE SCORES  
BY VISITING [CONTROLGLOBAL.COM](http://CONTROLGLOBAL.COM)