

Instruction Sheet

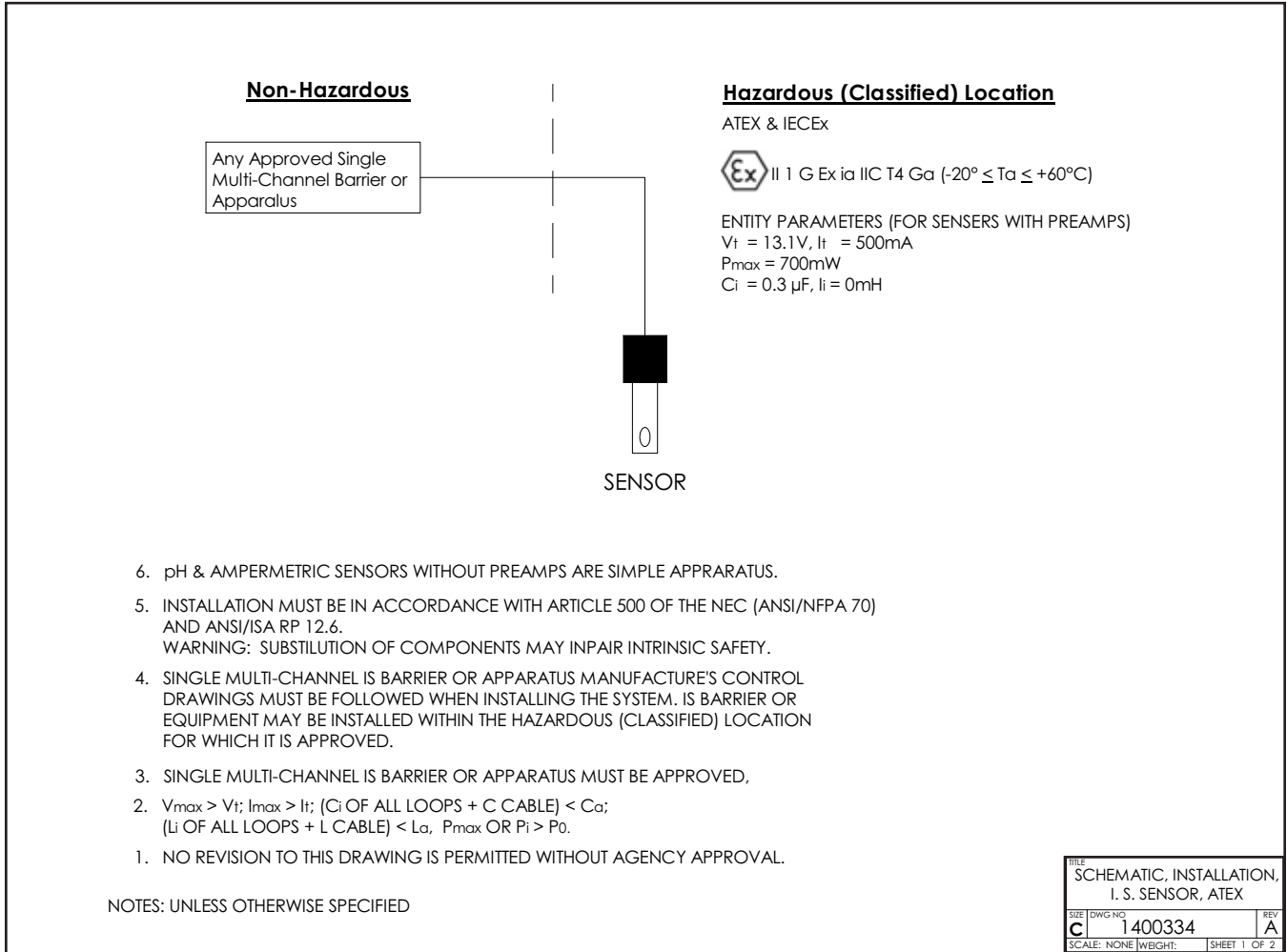
PN 1700737

July 2011/RevA

Baseefa pH Sensor Hazardous Area Installation

Baseefa Installation Drawing

Baseefa Certificate Number: Baseefa10ATEX0156X



The pH sensors listed below can be used with this installation drawing. Sensors may or may not contain an integral preamplifier.

3900/VP 396/VP 399/VP
3500/VP 396R/VP 389/VP
3300HT/VP 396P/VP 385/385+
3400HT/VP 398R/VP

Sample Labels

WARNING

EXPLOSION HAZARD

ELECTROSTATIC

Only clean with damp cloth.

Pressurized spray injury

Assembled in Mexico
 Model#3500-PR-02-10-21-30
 RTD Pt100 Soft. Ver. _____
 SQ#10123 SO#81000123
 SN:B10-1245078-002
 A/M 3500P-PR-02-10-21-30-

(BAR CODE)

BAS: 9241722-00/A
 CSA: 9241723-00/A
 FM: 9241724-00/A

ROSEMOUNT[®]
 Analytical Irvine, CA, USA

II 1 G

CE 1180

See manual.
 Baseefa10ATEX0156X
 IECEx BAS 10.0083X
 Ex ia IIC T4 Ga (-20°C ≤ Ta ≤ 60°C)

① Information from other agencies may appear on this label.

② These are data fields; information may vary from what is shown.

TITLE: LABEL, INFORMATION, SENSOR, BASEEFA		
SIZE	DWG NO	REV
B	9241722-00	A
SCALE: NONE	WEIGHT:	SHEET 1 OF 1

extracted from drawing 9241722-00

ROSEMOUNT[®]
 Analytical

MODEL to 105°C (140°C)
SN 6 barg

Baseefa10ATEX0156X IECEx BAS 10.0083X
 Ex ia IIC T4 Ga (-20°C ≤ Ta ≤ 60°C)

II 1 G

CE 1180

See manual.

(BAR CODE)

Made in USA

①

① Information from other agencies may appear on this label.

TITLE: LABEL, SENSOR 3800/3800VP, BASEEFA		
SIZE	DWG NO	REV
B	9241728-00	A
SCALE: 1:1	WEIGHT:	SHEET 1 OF 1

extracted from drawing 9241728-00

Emerson Process Management

2400 Barranca Parkway
 Irvine, CA 92606 USA
 Tel: (949) 757-8500
 Fax: (949) 474-7250
<http://www.raihome.com>